



Marine Street, London, SE16 4BN

A contemporary and naturally bright apartment in ever so popular Bermondsey. The property boasts a generous open plan living area with private balcony enjoying stunning skyline views, a fully equipped kitchen, a spacious bedroom with built-in wardrobe, and the stylish bathroom.

Bermondsey underground station is moments away and London Bridge is within walking distance.

A plethora of local independent businesses including award winning coffee shops, cheesemongers, greengrocers, bakeries and breweries are just round the corner under the arches, while the River Thames and Shad Thames are within 10 minutes walk.

Share of Ownership: 40% ownership calculated on the 100% price of £435,000

Service Charge: £1994.76 per year

Years Left on the Lease: 113

Monthly Rent: £369.70

Share of Ownership: 40%

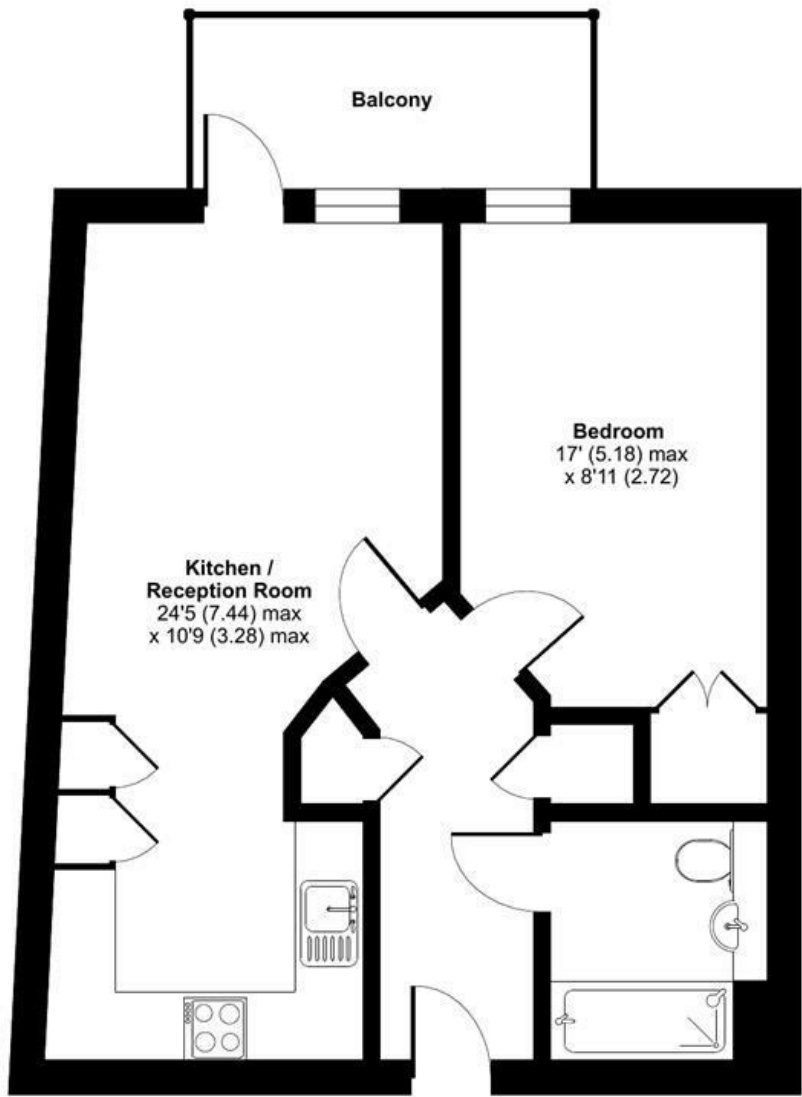
- Contemporary Apartment
- Private Balcony
- Stunning Views
- Modern Kitchen
- Stylish Bathroom
- SHARE OF OWNERSHIP

Alex & Matteo
ESTATE AGENTS

£174,000

Eyot House, Marine Street, London, SE16

Approximate Area = 503 sq ft / 46.7 sq m
For identification only - Not to scale



SIXTH FLOOR

Alex & Matteo
ESTATE AGENTS



Certified
Property
Measurer

Floor plan produced in accordance with RICS Property Measurement Standards incorporating International Property Measurement Standards (IPMS2 Residential). © nitchcom 2023. Produced for Alex & Matteo Estate Agents. REF: 971766

Energy Efficiency Rating		
	Current	Potential
Very energy efficient - lower running costs		
(92 plus) A		
(81-91) B	82	82
(69-80) C		
(55-68) D		
(39-54) E		
(21-38) F		
(1-20) G		
Not energy efficient - higher running costs		
England & Wales		
EU Directive 2002/91/EC		